

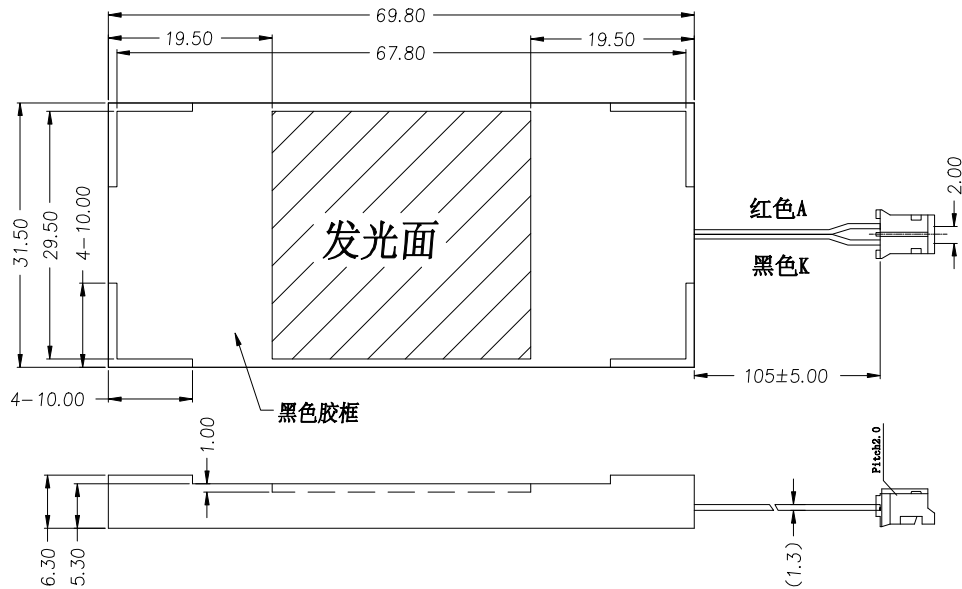
1. 结构尺寸 MECHANICAL OUTLINE

(未注尺寸公差) Specified Tolerances is:

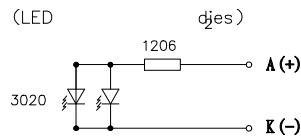
xx ± 0.2
x ± 0.2

COLOR : WHITE

颜色 : 白色



2. 电路图 CIRCUIT DIAGRAM (LED)



NOTE:

1. () : REFERENCE DIMENSION.
2. ▽ : SPECIAL CHARACTERISTIC.

注意防静电

3. 保存和焊接条件 STORAGE & SOLDERING CONDITIONS:

- Store with care. Storing the units in bad condition will cause the reflector sheet and decrease its adhesive power. Storage The products under the condition: temperature (25°C ± 10°C) and humidity (65%RH±20%RH) our recommendation.

- 注意保存. 保存条件不好时会降低反光膜 (扩散膜) 与导光片 (反射壳) 的粘附力. 推荐保存条件为: 温度 25°C±10°C 湿度 65%RH±20%RH

ISSUE 标识	AMENDMENT 改正内容	Date 日期	DESIGN: 设计
标识	改为端子线连接	190705	CHECKED: 检查
			COUNTERSIGN: 会签
			APPROVED: 批准
Drawing No: 图号	RHL1736.2.01	REV: 版本	A1

- The Soldering Temperature is 260±5°C and Soldering Time should be less than 3 sec, and soldering iron power should be less than 30W.
- The soldering point should be farther than 1.6mm from body .

- 焊接温度 260°C±5°C, 焊接时间小于3秒 烙铁功率小于30W.
- 焊接点应离产品实体大于1.6mm .

4. 极限参数 ABSOLUTE MAXIMUM RATINGS

(除非特别说明, 环境温度 Tamb≤25°C, The Ambient temperature Ta=25°C)

项目 Item	符号 Symbol	条件 Conditions	值 Rating	单位 Unit
* 极限直流正向电流 Absolute maximum forward current	I _{fm}		25*2	mA
* 脉冲驱动时极限正向电流 Peak forward current	I _{fp}	1 msec 脉冲, 1/10 占空比 1 msec Plus 10% Duty Cycle	75*2	mA
反向电压 Reverse Voltage	V _r		5.0	V
* 极限功耗 Power dissipation	P _d		80*2	mW
工作温度 Operating Temperature Range	T _{opr}		-20~+70	°C
贮存温度 Storage Temperature Range	T _{stg}		-30~+80	°C

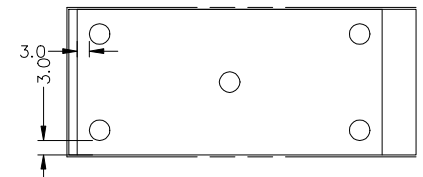
5. 电、光特性 ELECTRICAL-OPTICAL CHARACTERISTICS

(除非特别说明 环境温度 Tamb≤25°C, The Ambient temperature Ta=25°C)

项目 Item	符号 Symbol	最小值 MIN.	典型值 TYP.	最大值 MAX.	单位 Unit	测试条件(Ta=25°C) Condition
正向电压 Forward Voltage	V _f		5	(5.2)	V	I _f =20mA
色度 Chromaticity Coordinates	X	0.26		0.35		
	Y	0.26		0.35		
色温 colo(u)r temperature			8500		K	TEST INSTRUMENT 测试仪器: BM-7
亮度 Luminance	L _v	250			cd/m ²	
均匀度 Uniformity	Avg	75	--	--	%	
反向电流 Reverse Current (Per Led)	I _r			15	μA	V _r = 5 V

- * 亮度值是5个测量点的平均值, 亮度最小值比最大值一般大于75% 使用BM-7 亮度色度仪测量, 测量光圈 φ 5 mm.

The luminance is the average value of points, and 5
The L_{vmin}/L_{vmax}. is more than Typical 75%
The measurement instrument is BM-7 luminance
Colorimeter. The aperture is φ 5 mm.



Drawing No: 图号	RHL1736.2.01	REV: 版本	A1	STAMP 确认
-------------------	--------------	------------	----	-------------